

Wheelhome brochure for; Vikenze III-e SWB electric Vikenze III-e XL (LWB) electric Vikenze III (used petrol).

**We thank you for your interest in our little
Camper-cars and trust you'll find the following
information useful.**

**Please contact us to discuss further at;
Wheelhome, K7, Frieze Hall Farm, Coxtie Green Road,
South Weald, Brentwood Essex, CM14 5RE.**

**Tel: 01277 563227 Email: stephen@wheelhome.co.uk
Web: www.wheelhome.co.uk**



Charging up at Yell ferry terminal, Shetland Isles



Iceland, 2023

Wheelhome “Terms of Business”

Wheelhome acknowledge the kind assistance of Essex Trading Standards in compiling these terms.

To place an order: We will issue a written quotation as per your required specifications. We require a non-returnable deposit of £2,000 (two thousand pounds) to place an order. Once received, we will issue a receipted invoice for the deposit. The vehicle will be ordered and a “build slot” will then be booked in our work schedule and we’ll give you an expected completion/delivery date, if not already done so. This is normally 3-6 months. However, see below.

Possible price changes.

Prices stated are current and include VAT.

We are currently experiencing significant demand, we therefore have to consider the possibility of price/costs changes. If the vehicle manufacturer alter their prices (up or down), or government taxation changes (up or down) this has to be considered “out of our control”.

Therefore, in the event that either or both change we will endeavour to absorb those costs. However, if we cannot, we may have to revise our quotation to you. In this event, you would be entitled to either agreeing to pay the changes after you've verified them via vehicle manufacturer and/or HMRC. If you are not happy with any changes you can cancel your order with us and receive a 100% refund of your deposit. Please note that this is a very last resort that we will not seek to enact unless absolutely necessary.

If we are supplying a brand new vehicle for you.

If we are sourcing a brand new base vehicle for you, to which we will add the conversion, we will need 50% of our quoted total price from you just prior to us purchasing it on your behalf (typically 4-6 weeks before we complete and deliver).

At that time, the vehicle will be taxed and registered in your name and you will own the vehicle, not us, although we will of course, have it insured.

We will send you a final invoice about a week prior to delivery. The final payment must only be in the form of BACS (via your personal internet banking), or a Bank Transfer (made by your bank). Our bank details will be on our quotation and invoices.

If we are sourcing a used base vehicle for you.

If we are sourcing a used base vehicle for you, to which we will add the conversion, we will need 50% of our quoted total price from you just prior to us purchasing it on your behalf (typically 2-4 weeks before we start your job).

At that time, the vehicle will be taxed and registered in your name and you will own the vehicle, not us, although we will of course, have it insured.

We often travel the whole of the U.K. to source your vehicle, this is included in your quotation.

Delivery

We are pleased to say that once completed and we are in receipt of cleared funds, we will deliver your Wheelhome to your home, free of charge, anywhere in the U.K. mainland. Other destinations are possible but will be subject to a very reasonable charge. (We’ve even delivered to Shetland!).

Wheelhome will do all that it reasonably can to meet the expected date given for delivery, or if no date has been given, within a reasonable time from the date of your order. However, we cannot be responsible for delays caused by circumstances beyond our control. In this case we will complete the delivery as soon as is reasonably possible.

Wheelhome warranty (everything “we do”).

12 months on new vehicle and ex-demonstrators, 6 months for a used vehicle. In the unlikely event of a “failure” with the Wheelhome conversion you must notify us at the earliest practical time and written (ie email) agreement obtained before incurring any costs for any claim. We will normally authorise a local-to-you motorcaravan dealer/caravan dealer/garage to carryout repairs, although we reserve the right to have our garage carryout repairs if we feel it appropriate.

Wheelhome reserve the right to repair/replace or modify as Wheelhome deem best.

We recommend that habitation servicing is carried out by your local caravan/motorcaravan dealer, or perhaps mobile engineers.

Wheelhome conversions require less servicing than typical motorcaravans as much of the equipment is maintenance (and gas) free.

Motorcaravan base vehicle.

New Vauxhalls come with 36 months from Date of Registration plus 8 years on the vehicle’s High-Voltage Traction battery, ask for further details.

Used: These come with the balance of the 36 month from registration Vauxhall warranty.

These warranties remain unaffected by the Wheelhome conversion and so normal vehicle servicing is carried out by the main dealers.

THE ABOVE GUARANTEES ARE IN ADDITION TO YOUR STATUTORY RIGHTS AND
DOES NOT AFFECT THEM.

Please do not hesitate to contact us if you require any further assistance.

Stephen R. Wheeler. (prop).
Specifications subject to change.

All information believed correct as at 15.9.23 E. & O. accepted.



Wheelhome Vikenze III-e 2TS on Vauxhall Combo-e Life



**Brand new
£62,950
or
New conversion
on 1 year old
vehicle £57,000.**

**Two
travelling
seats in cab**

Short Wheelbase, single berth with optional second bed in roof.
Two belted travelling seats in cab.
Not only is the vehicle propelled by electricity but you cook with electric too!
You're getting an electric car and an electric camper - a true e-camper
Access to all facilities, including the Porta Potti, even at night-time
Super-convenient On The Pitch charging of EV through standard hook-up
Just 1.86m high so easily garageable, often cheaper on ferries too.
25 miles of back-up range available.

Winner of the Campervan Innovation Award, October 2023.

Tested May 2022 over a round-trip of 2,104 miles (at a cost of just £125) from Essex to Shetland, inc Aberdeen to Essex in one day! Brilliant - and cheap to run too!

Prices include V.A.T, on the road charges and delivery to your home U.K. mainland, and 12 months Wheelhome warranty.



Quartz silver (G41)



Taking a top-up charge from on-board batteries. Shetland 2022

The Vikenze III-e is based on the SWB Vauxhall Combo-e Life "Design", a **Battery Electric Vehicle (BEV)**, with an electric motor producing 136PS / 260Nm, and has a 50kWh battery, set below the floor level. The official WLTP range is 174 miles, which we have achieved in 20C temperatures.

In windy, cool temperatures of mostly just 9C, our 16-day, 2,104 mile test to Shetland Isles in May 2022, averaged a range of 150 miles, and a best (on a warmer day) of 170 miles. Total cost was just £125 - about 28% of cost of doing it in a 40mpg petrol vehicle. On a long journey plan to drive for about two hours or so and then stop and grab a 30 to 40 minute charge.

Plan your trip so this conveniently ties up with comfort or meal stops as you can still use the cooking facilities whilst charging up. Once at your destination though, in our case, a cool Shetland, you simply charge-up from the campsite hook-up @ 8amps and enjoy setting off the next day with a 100% SOC (State of Charge).

You'll find Vikenze III-e is a very quiet, comfortable and refined e-camper. 2TS offers one or two single beds with two seats for travelling (in the cab) and two for camping. You'll need the XL (long Wheelbase) version if you require four travelling seats (4TS).

Vikenze III-e has one low-level single bed and, when specified, a second bed that lowers from the roof space. Full standing headroom below during day time.

Access to the optional roof bed is easy via two large, sturdy steps, revealed by rotating the hob part of the kitchen unit which also provides night-time Porta Potti access.

Vikenze III-e has our most advanced all electric cooking system with induction hob, microwave oven, 230v sockets (ideally placed for using a toaster, mini-oven or kettle), 2 x USB outlets. These are all normally powered from our on-board 3,000watt inverter, a huge Lithium battery bank (cunningly located between the cab seats) and a huge, bespoke, 300w solar panel giving about a

week of off-grid camping in poor weather or, in reasonably bright weather Vikenze III-e is self-sufficient as it generates more than our needs.

You can of course, also take advantage of campsite hook-up to not only charge the auxiliary batteries, but the EV's batteries too!
Vikenze III-e all-electric cooking benefits are:

Environmentally friendly.
Fast cooking with no naked flame.
Reduced condensation when cooking compared to gas.



Driftwood furniture

Detachable bedding bag

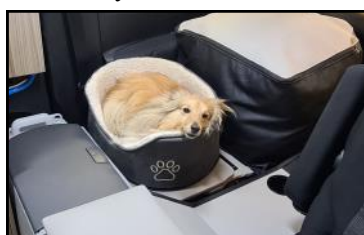
Induction hob, microwave, heater, it's all here!



No heavy/awkward/on-going expensive gas bottles.
What's not to like?

Vikenze III-e has an efficient 18 litre Waeco compressor fridge which is thermostatically controlled. This is easily tall enough to take upright milk cartons, or wine bottles. Simply switch on at start of holiday and switch off at the end. Runs exclusively from the auxiliary batteries. The sink/drain cover doubles up as the table on a island leg and the hob cover becomes a useful worktop when deployed at front end of kitchen unit. Fresh water storage is a removable 10 litre (2.2 gallon) Jerry can. The cold water is electrically pumped to the stainless steel sink and drainer. Both Porta Potti and water are conveniently serviced through the near-side sliding door.

Solo travellers can select the optional custom-made bedding "stuff" bag. This pops onto the back of the folded down N/S cab seat. It is perfect for your sleeping bag and pillows and is right out of the way. There is still space for an Isla-sized smallish dog crate here too. A large dog crate also, or even a folding bike, but you'll forfeit the



bag. Our specially developed elevating roof raises and lowers electrically, has large vents and carries a super-slim (3mm) 300watt solar panel, that covers the entire roof and charges the auxiliary batteries. The roof can be lowered whilst wet and aired later. A clothes roof locker lowers from within the elevating roof on a strap with 2 x chrome towel rails fitted.

Vikenze III-e offers: Air conditioning. Cabin pre-conditioning via Vauxhall APP. Hill Hold. Cruise Control. Bluetooth connectivity for hands-free phone. Alloy wheels. 8" colour touch screen with Apple Car-Play/Android Auto (just connect your Smart phone and you have the brilliant Google Maps for navigation on the big screen. Automatic Emergency Braking with pedestrian detection. Forward Collision Alert. Automatically dimming rear view mirror. Anti-lock brakes (ABS) with stability control. Power steering with fully adjustable steering column. Electrically operated privacy glass windows and folding door mirrors.



Porta Potti access with bed deployed

Remote control central door locking.

Tailgate with opening heated rear window and wash wipe. Driver's seat height and lumbar adjustment. Driver's and passenger airbags.

Rear parking Sensors. Built-in litter bin. Built-in fan heater, 800-1500watts, runs from mains hook-up or from the auxiliary batteries (for an hour or so). 10 metre campsite orange mains hook-up cable. Built-in/pull-out Type 2 charging device enabling extremely convenient charging from campsites, your home, or any domestic 3-pin socket. 12v (torpedo-style) outlet in centre consul.



Your suitcase in the sky!
 Wind-down roof storage - great for folded clothes, or specify as a single bed and get the mattress.



2TS Travelling mode with two seats in cab.

If you require four seats order the 4TS XL.



Under seat storage (2TS)

New Vikenze III-e 2TS on Vauxhall Combo e-Life "Design" in Arctic White. One or two berth.....£62,950
New Vikenze III-e 2TS conversion on 1 year old vehicle...£57,000

Extra cost options inc. VAT.

"Ultimate" model upgrade from Design, includes Dual-Zone Electronic Climate Control, upgraded navigation, Panoramic Rear View Camera, Heated Steering Wheel, LED Daytime Running Lights (DRLs), body coloured side mouldings.£1,860

Second bed (in lieu of roof storage locker) that lowers down from the elevating roof to give total of two single beds.....£468

"Faux leather" upholstery to all seats.....£3,850

Metallic vehicle bodywork colours.

Cool Grey. Vulcan Grey. Contrast Silver. Night Blue.....£570

Tow bar: detachable, ideal for bike rack.....£567

11kW three-phase on-board charger.....£360

Rear underfloor storage, via trap door. Approx 110 litres.....£635

Puntinella grey furniture (standard)£0

Driftwood (wood-grained)£225

Bedding stuff bag. Clips onto folded front passenger seat back....£130

Porta Potti 335.....£138

Electric oven, 9 litre. Portable, not built-in.....£58

Electrically lowering roof locker (manual standard).....£225

1 x double USB charge point in centre consul.....£45

1 x double USB charge point beside OSR seat.....£65

Vikenze III-e dimensions

External height, roof lowered;	1.86m (6'1")
Overall length;	4.4 m (14'5")
External width (<i>mirrors folded in</i>);	1.92m (6'4")
External width (<i>mirrors out</i>);	2.11m (6'11")
Headroom in galley (under the raised roof bed):	1.87m (6'2")
Lower single bed;	2.0m (6'7") x 0.69m (2'3")
Roof bed (single); Max weight: 100kgs.	1.9m (6'3") x 0.92m (3'0")
Payload:	310kgs.
Max Towing capacity (braked trailer)	750kgs.



Wheelhome Vikenze III-e XL (four travelling seats) On Vauxhall Combo-e Life long wheelbase

Brand new
from
£64,950

Brand new
conversion
on used
vehicle from
£62,000

Four
travelling
seats

This is the Long Wheelbase version (called XL) of the Vikenze III-e, it is very similar to the short wheelbase but additionally has the following;

350mm longer overall (making it 4.75m long) so still garageable. Same height @ just 1.86m.

Four original Vauxhall travelling seats all with 3-point seat belts.

Rear boot area ideal for carrying a folding bike, a dog or an awning.

Longer kitchen unit offering the convenient option of a built-in oven.

Even larger, 345watt solar panel.

Remember, with a Wheelhome e camper, you're getting a four-seater electric car and an electric camper.

Prices include V.A.T, on the road charges and delivery to your home U.K. mainland, and 12 months Wheelhome warranty.



XL on tour August 2023 in Iceland

The Vikenze III-e XL is based on the LWB Vauxhall Combo-e Life "Design", a **Battery Electric Vehicle (BEV)**, with an electric motor producing 136PS/260Nm, and has a 50kWh battery, set below the floor level. The range is typically 150-165 miles depending on temperature. On our Iceland tour in August 2023 we covered 3,650 miles and averaged a respectable 3.0 m/kWh in chilly temps!

Charging most nights from the campsite plus some public charge stations the cost was approx. 38% of doing it in a 40mpg petrol vehicle. On a long journey (such as our Iceland trip) we recommend to drive for about 1.5 to 2 hours and then stop and grab a 30 minute charge - keeping within the ideal 20% to 80% battery State Of Charge.

Plan your trip so this conveniently ties up with comfort or meal stops as you can still use the cooking facilities whilst charging up. Once at your destination though, in our case, a cool and windy Iceland, you simply charge-up from the campsite hook-up @ 8amps and enjoy setting off the next day with a 100% SOC (State of Charge).



at home as a car, and three seats when away camping.



You'll find Vikenze III-e XL is a very quiet, comfortable and refined e-camper with four seats for travelling around

Vikenze III-e XL has one low-level single bed and, when specified, a second bed that lowers from the roof space.

Full standing headroom below during day time.

Access to the optional roof bed is easy via two large, sturdy steps, revealed by rotating the hob part of the kitchen unit which also provides night-time Porta Potti access.

Vikenze III-e XL has our most advanced all electric cooking system with induction hob, microwave oven, 230v sockets (ideally placed for using a toaster, mini-oven or kettle), 2 x USB outlets. These are all normally powered from our on-board 3,000watt inverter, a huge Lithium battery bank (cunningly located between the cab seats) and a huge, bespoke, 345w solar panel giving about a week of off-grid camping in poor weather or, in reasonably bright weather Vikenze III-e is self-sufficient as it generates more than our needs.

You can of course, also take advantage of campsite hook-up to not only charge the auxiliary batteries, but the EV's batteries too!

Vikenze III-e all-electric cooking benefits are:

Environmentally friendly.

Fast cooking with no naked flame and therefore reduced

condensation when cooking compared to gas.



No heavy/awkward/on-going expensive gas bottles.

What's not to like?

Vikenze III-e has an efficient 18 litre Waeco compressor fridge which is thermostatically controlled. This is easily tall enough to take upright milk cartons, or wine bottles. Simply switch on at start of holiday and switch off at the end. Runs exclusively from the auxiliary batteries.

The sink/drain cover doubles up as the table on a island leg and the hob cover becomes a useful worktop when deployed at front end of kitchen unit. Fresh water storage is a removable 10 litre (2.2 gallon) Jerry can. The cold water is electrically pumped to the stainless steel sink and drainer. Both Porta Potti and water are conveniently serviced through the near-side sliding door.

Solo travellers can select the optional custom-made bedding "stuff" bag. This pops onto the back of the folded down N/S cab seat. It is perfect for your sleeping bag and pillows and is right out of the way. There is still space for an Isla-sized smallish dog crate here too. A large dog



crate also, or even a folding bike, but you'll forfeit the bag. This is a very significant use of space. Our specially developed elevating roof raises and lowers electrically, has large vents and carries a super-slim (3mm) 345watt solar panel, that covers the entire roof and charges the auxiliary batteries. The roof can be lowered whilst wet and aired later.

Vikenze III-e XL offers: Air conditioning. Cabin pre-conditioning via Vauxhall APP. Hill Hold. Cruise Control. Bluetooth connectivity for hands-free phone. Alloy wheels. 8" colour touch screen with Apple Car-Play/Android Auto (just connect your Smart phone and you have the brilliant Google Maps for navigation on the big screen. Automatic Emergency Braking with pedestrian detection. Forward Collision Alert. Automatically dimming rear view mirror. Anti-lock brakes (ABS) with stability control.

Power steering with fully adjustable steering column. Electrically operated privacy glass windows and folding door mirrors. Remote control central door locking. Tail-gate with opening heated rear window and wash wipe. Driver's seat height and lumbar adjustment.



Large and comfy single bed

Driver's and passenger airbags. Rear parking Sensors. Built-in litter bin. 10 metre campsite orange mains hook-up cable. 1 x chrome towel rail fitted behind rear seat in boot area. A 12v (torpedo-style) outlet in centre consul.

Built-in fan heater, 800-1500watts, runs from mains hook-up, or from the on-board batteries/inverter (for an hour or so).

Built-in/pull-out Type 2 charging device enabling extremely convenient charging from campsites, your home, or any domestic 3-pin socket.



XL provides a useful "boot" area, with a tie-down eye. Ideal for a folding bike, awning or a dog, or somewhere to put your shopping bags.

New Vikenze III-e XL on Vauxhall Combo e-Life "Design" in Arctic White. 4 travelling seats with 3-point seat belts.

One berth.....£64,950

New Vikenze III-e XL conversion on 1 year old vehicle.....£62,000

Extra cost options inc. VAT.

"Ultimate" model upgrade from Design, includes Dual-Zone Electronic Climate Control, upgraded navigation, Panoramic Rear View Camera, Heated Steering Wheel, LED Daytime Running Lights (DRLs), body coloured side mouldings.£1,860

Second bed (in lieu of roof storage locker) that lowers down from the elevating roof to give total of two single beds.....£468

"Faux leather" upholstery to all seats.....£3,850

Metallic vehicle bodywork colours.

Cool Grey. Vulcan Grey. Contrast Silver. Night Blue.....£570

Tow bar, only to be used for bike rack, not towing.£567

11kW three-phase on-board charger.....£360

Rear underfloor storage locker, accessed via hidden trap door, ideal for walking boots etc. Approx 120 litres.....£635

Puntinella grey furniture (standard)£0

Driftwood furniture (wood-grained)£225

Bedding stuff bag. Clips onto folded front passenger seat back....£130

Porta Potti 335.....£138

Electric oven, 9 litre. Built into the kitchen unit.....£132

Electrically operated roof locker (manual is standard).....£225

1 x double USB charge point in centre consul.....£45

1 x 12V charge point beside OSR seat.....£45

Vikenze III-e XL dimensions

External height, roof lowered;	1.86m (6'1")
Overall length;	4.75m (15'7")
External width (<i>mirrors folded in</i>);	1.92m (6'4")
External width (<i>mirrors out</i>);	2.11m (6'11")
Headroom in galley;	1.87m (6'2")
Lower single bed;	2.0m (6'7") x 0.71m (2'4")
Roof bed (single); Max: 100kgs.	2.1m (7'0") x 0.92m (3'0")
Payload:	370kgs. (TBC)
The XL is not rated for towing.	



Kettle shown just for perspective!

The under-floor storage box has a restricted access hatch so is ideal for shoes/boots/levelling blocks etc.
It is very large at circa 110 litres. Approx sizes in cm are: L: 90 W: 52 H: 26



You won't find this on a petrol car!
Wheelhome produced under-bonnet cable storage tray.



Water and Porta Potti service



Public EV charging in Iceland



Top-loading, 18 litre Wacco super-efficient compressor fridge

Vauxhall Combo-e Life body colours



Copper metallic
No longer available.



Night Blue
Recommend: Puntinella grey.



Arctic White
Recommend: Neutral so either colour scheme.



Contrast Silver
Recommend: Puntinella grey or Driftwood.



Cool Grey
Recommend: Puntinella grey or Driftwood.
(this is a fine-metallic soft dove-grey colour)



Vulcan Grey
Recommend: Puntinella grey.

Wheelhome comments:
Driftwood is a wood-grained grey-ish brown laminate.
Puntinella (which we've used for many years) is a mottled grey laminate, perhaps considered more car-like.
Vehicle seats are always grey/black.



Driftwood furniture



Puntinella furniture shown on a 2TS

Wheelhome Vikenze III on used petrol Vauxhall Combo Life

This brochure pertains only to the supply of a new Vikenze III conversion on a Wheelhome sourced used petrol Vauxhall Combo Life, up to 3 years old with a manual gearbox (auto possible) but note that the layout will be “mirrored” from images shown below to closely follow our electric versions. **Guide price £47,600.**

Offering four belted travelling seats and one or two single beds.

Just 1.86m high so garageable.

It's a car and a camper - Campercar.

Use as one or two berth.

All-electric environmentally friendly cooking, huge solar panel - so gas free!

Thoughtful, considered design ensures access to all facilities even at night-time is retained, including the Porta Potti. Prices include V.A.T, on the road charges and delivery to your home U.K. mainland, and 12 months Wheelhome warranty.

Please note: As of January 2022 Vauxhall stopped taking orders for petrol Combo Life. Therefore, any new orders we take will only be to supply an electric version, called Combo-e Life - see separate brochure.



The Vikenze III is based on the Vauxhall Combo Life which benefits from the latest technology in petrol engine development with a multi-valve 1.2 ltr turbocharged petrol engine (Euro 6D, 6.3) 3 cylinders, 110 BHP/ CO2 159g/km. This petrol engine has been tuned to perform more like a diesel engine in that it has low-down pulling power and can return 45mpg.

This is a very modern, quiet, comfortable and refined car/camper equally at home going to the South of France - or helping out on the school run.

Vikenze III conversion offers:

A versatile interior layout giving you two, three or four travelling seats, all with 3 point seat belts.

Two people can camp with up to 4 travelling seats although, typically, you'll leave the forth one at home to increase gangway space. These are original Vauxhall seats and simply clip in and out, weighing approx 14kgs.

If your priority is storage you might choose to have the excellent 80 litre under-floor storage locker.

Vikenze III has one low-level single bed and a second bed that lowers from the roof space. Full standing headroom below during day time. Access to the roof bed is easy via two

large, sturdy steps, revealed by rotating the hob part of the kitchen unit, also providing night-time Porta Potti access. Vikenze III has our long-running all electric cooking system with 230v sockets (ideally placed for using a toaster, 9 litre oven or kettle), 2 x USB outlets, Induction hob, 600watt microwave.

230v is supplied via our comprehensive electrical system with an on-board inverter taking it's supply from a very high-capacity Lithium battery with a huge 300watt solar panel giving 2-3 days off-grid camping.

In bright weather, however, the Vikenze III can be totally energy self-sufficient! You can of course, also take advantage of campsite hook up which charges the battery and can also power the equipment.



Vikenze III all-electric cooking benefits are:

Environmentally friendly.

Fast cooking with no naked flame.

Reduced condensation when cooking compared to gas.

No heavy/awkward/expensive gas bottles to lug about.

Vikenze III cooking system: What's not to like?

Vikenze III has an efficient 18 litre Waeco compressor fridge which is thermostatically controlled. This is easily tall enough to take upright milk cartons, or wine bottles.

The sink/drain cover doubles up as the table on a island leg and the hob cover becomes a useful worktop when deployed behind the driver's seat.
 Fresh water storage is a removable 10 litre (2.2 gallon) Jerry can, conveniently accessed through the off-side sliding door. The cold water is electrically pumped to the stainless steel sink and drainer.
 The Porta Potti is conveniently removed for servicing through the off-side sliding door.

From January 2023 our elevating roof now raises a little at the front end as well as the back to increase headroom and aids smoother air-flow. It raises and lowers electrically, has large vents and carries a super-slim (3mm) 300watt solar panel, that covers the entire roof. The roof can be lowered whilst wet and aired later.

Standard vehicle features on Vauxhall Combo Life include:

Four original Vauxhall MPV seats for travelling, all with three point seat belts. Air conditioning. Cruise Control. Hill Hold. 8" colour touch screen with Apple Car-Play / Android Auto (just connect your Smart phone and you have the brilliant Google Maps for navigation (on the big screen) and even voice-controlled Google Assistant!



Porta Potti access with bed down

Bluetooth connectivity for hands-free phone.
 Automatic Emergency Braking with pedestrian detection. Forward Collision Alert.

Automatically dimming rear view mirror. Alloy wheels.
 Anti-lock brakes (ABS) with stability control.
 Power steering with fully adjustable steering column.
 Electrically operated front windows and door mirrors.

Remote control central door locking.
 Tailgate with heated rear window and wash wipe.
 Driver's seat height and lumbar adjustment.
 Driver's and passenger airbags.
 Rear parking sensors. Some models additionally have a rear camera and front parking sensors.



Head end of adult-sized roof bed. Don't always need the roof bed? Take out the mattress and stow folded clothing in its place - about the volume of a carry-on suitcase.



Four original Vauxhall travelling seats all with three-point seat belts.



Driftwood furniture



Very comfortable rear seat that has bed cushions on it's back...



That folds over to make a flat, comfy and large lower bed.



Puntinella furniture with faux suede grey curtains, blends with the car very well.

Shown with 4 seats in place and worktop behind driver's seat.

Vikenze III: One or two berth with 2, 3 or 4 travelling seats on Vauxhall Combo Life with 1.2 litre turbo petrol engine (130 BHP) with manual gearbox.

Solid bodywork colours: Onyx black or Jade white.

Metallic vehicle bodywork colours.
 Cool Grey (GAC). Quartz Silver (G41). Copper Brown (10K).
 Moonstone Grey (G40). Night Blue (GBT).
 Note: body colours are usually no cost as used vehicle.

Extra cost options inc. VAT.

Tow bar: detachable, ideal for bike rack.....£600

Extra cost habitation options.

Underfloor storage, accessed via trap door. Approx 80 litres.....£635

Puntinella grey furniture (standard)£0
 Driftwood (wood-grained)£225

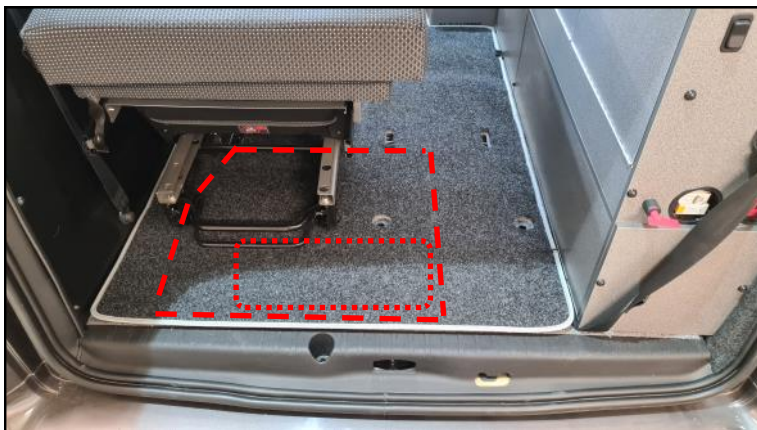
Beige deep pile carpets (anthracite std)£139
 Mains hook up cable, 10 metre£38
 Porta Potti 335£138

Electric portable fan heater, 1500watt. Runs from mains hook-up or from the on-board batteries/inverter for short periods.....£58

Kyham Screenhub drive-away awning. Buy from www.Khyam.co.uk

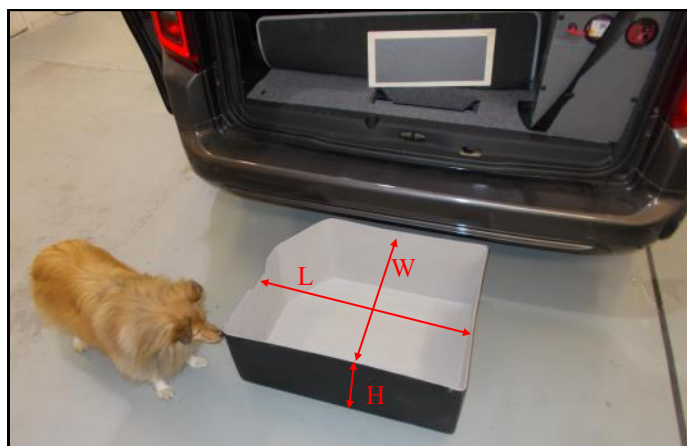
Vikenze III dimensions

External height, roof lowered;	1.86m (6'1")
Overall length;	4.4 m (14'5")
External width (<i>mirrors folded in</i>);	1.92m (6'4")
External width (<i>mirrors out</i>);	2.11m (6'11")
Headroom in galley (under the raised roof bed);	1.9m (6'3")
Lower single bed;	2.0m (6'7") x 0.66m (2'2")
Roof bed (single); Max weight: 110kgs.	1.9m (6'3") x 0.92m (3'0")
Payload;	460 kgs.
Max Towing capacity (braked trailer)	1,000kgs.



Access hole: 370 x 150
(OK for shoes/boots, hook up lead)

Extra cost under-floor storage compartment. Lift the mat for access. Great for shoes, walking boots, hook up cable etc.



Isla, the Shetland Sheep dog, inspects the storage box under the floor. (shown before fitting).

Approx max sizes in mm:
L: 630
W: 530
H: 260
(Circa 80 litres)



Quartz Silver (G41)

Vauxhall Combo Life body colours for Wheelhome Vikenze III camper.



Cosmic/Copper Brown (GLV)
Recommend: Driftwood.



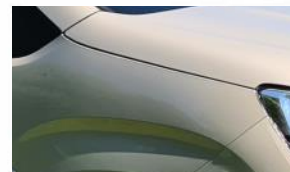
Night Blue (GBT).
Recommend: Puntinella grey.



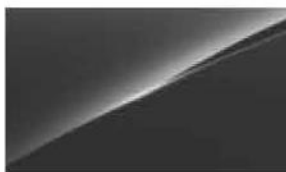
Solid White Jade (G20).
Recommend: Neutral so either colour scheme.



Quartz Grey (G41)
Recommend: Puntinella grey or Driftwood.



Cool Grey (GAC).
Recommend: Puntinella grey or Driftwood.
(this is a fine-metallic soft dove-grey colour)



Onyx black (G7R)
Wheelhome do not recommend black as gets extremely hot in the sun.



Solid Red. No longer available new.
Recommend: Puntinella grey or Driftwood.

Wheelhome comments:
Driftwood is a wood-grained grey-ish brown laminate.
Puntinella (which we've used for many years) is a mottled grey laminate, perhaps considered more car-like.
Vehicle seats are always grey/black.



Driftwood furniture



Puntinella furniture